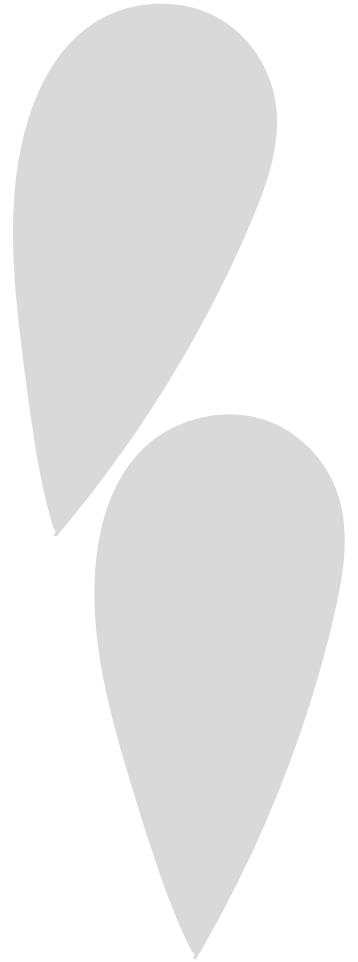
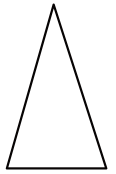
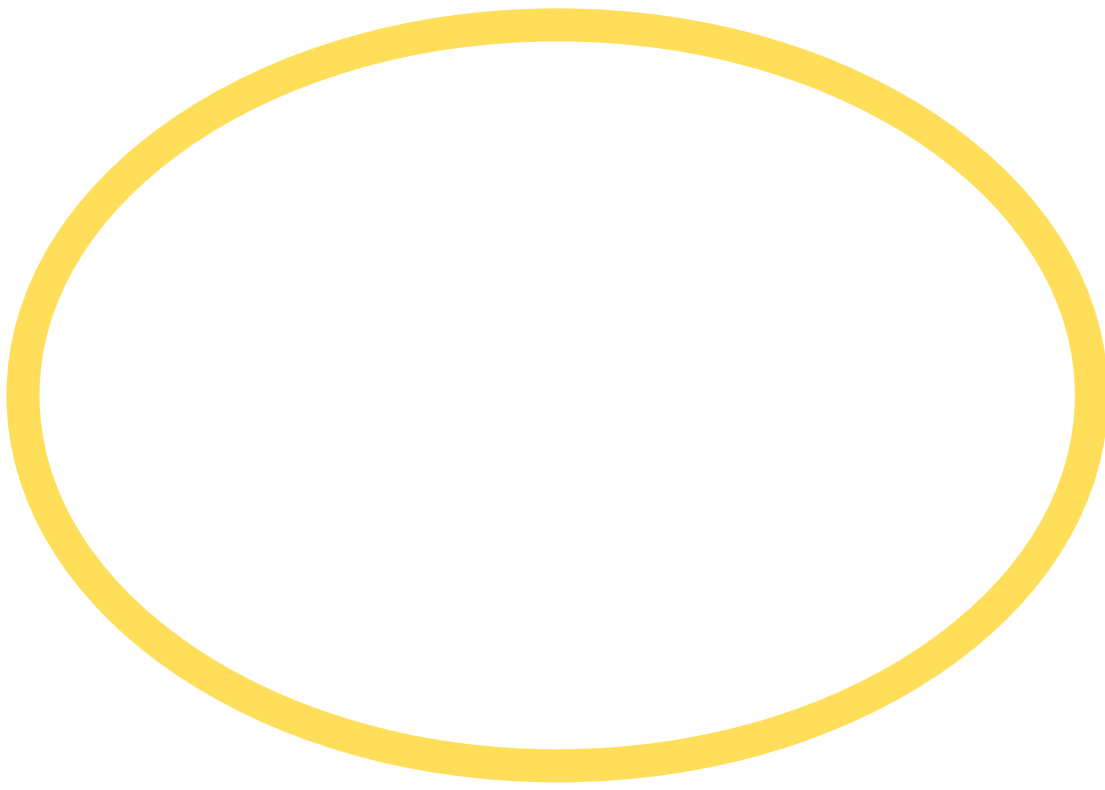


How to Use the Bee Kind Kindness Bees:



1. Use the version you wish: tracing template or printable template.
2. If you use the tracing template, print one copy on cardstock and cut out each piece to create templates. Trace each piece on construction paper (the body on yellow, the stripes on black, and the wings and stinger on white or gray).
3. If you use the printable templates, print one color copy for each child on cardstock.
4. Children will cut out the shapes and glue them together to create a Kindness Bee.
5. Trim the black strips once they're glued on so they don't hang over the edge of the bee's body. Remind children to make sure the words aren't hanging off the edge of the bee.
6. If you're using the tracing template bees, glue on the words or write the words.
7. Using a black marker, make an eye dot.
8. Brainstorm ways to "Bee Kind" and "Bee Sweet" and "Bee Yourself."
9. To connect this craft to creative writing, kids can write/draw and dictate how they can Bee Kind or how they can Bee Sweet using the writing prompt sheets.



Bee kind.

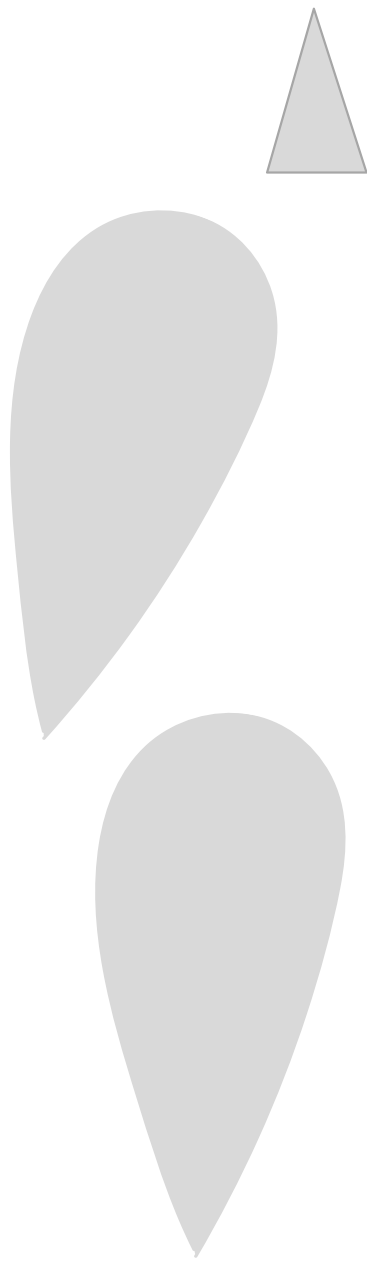
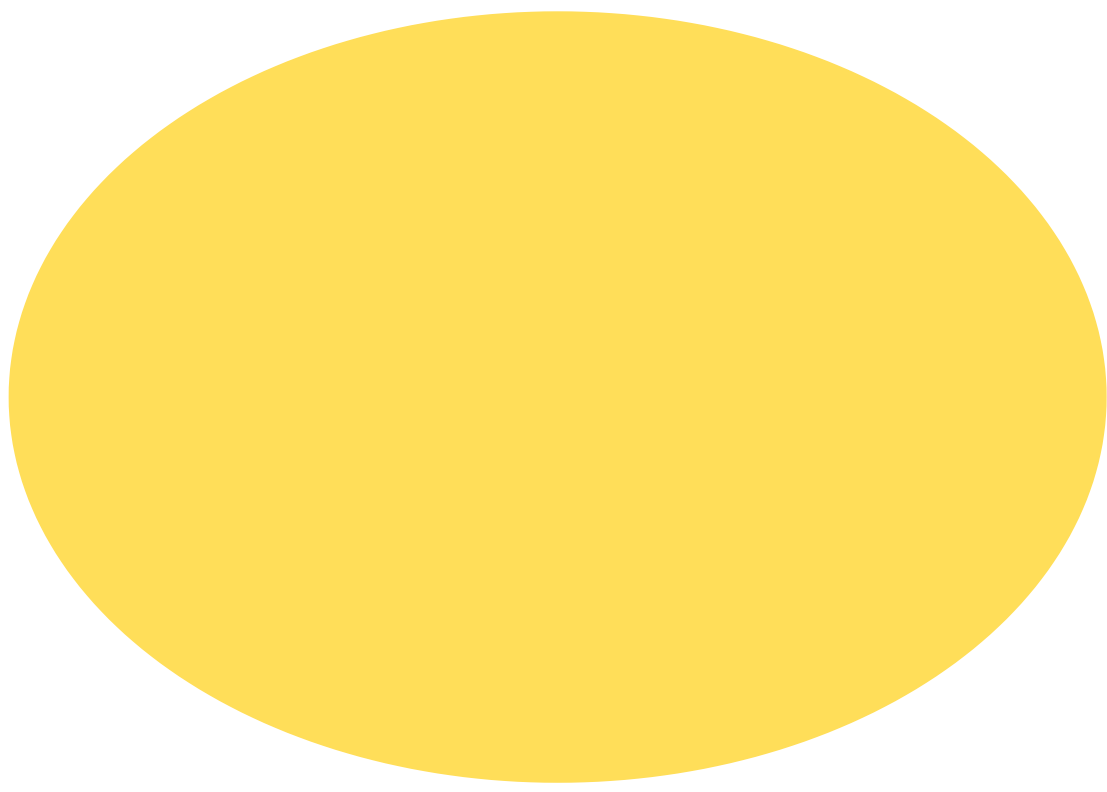
Bee Yourself.

Bee Sweet.

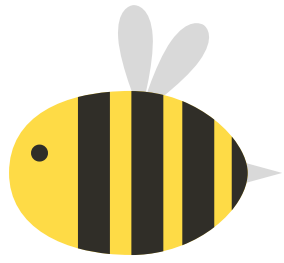
Bee kind.

Bee Sweet.

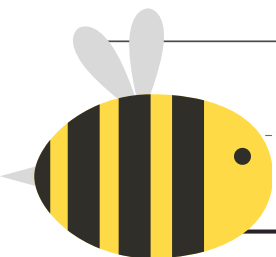
Bee YOURself.



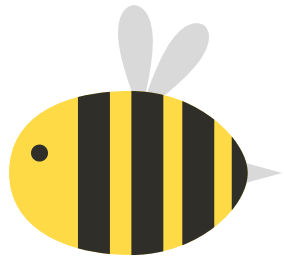
I can "Bee kind" when I:



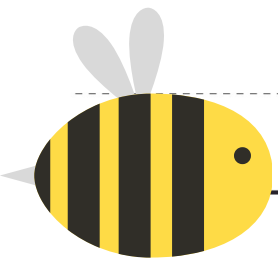
A large, empty rectangular box with a thick grey border, intended for drawing or writing.



I can "Bee kind" when I:



Handwriting practice lines consisting of solid top and bottom lines with a dashed middle line. There are five sets of these lines for writing.



I can "Bee Sweet" when I:



A large, empty rectangular box with a thick grey border, intended for drawing or writing.



I can "Bee Sweet" when I:



Handwriting practice lines consisting of four sets of horizontal lines. Each set includes a solid top line, a dashed middle line, and a solid bottom line.

